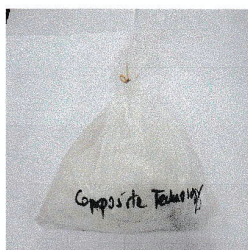


CERTIFICATE OF ANALYSIS

Client: iDecking International Ltd
address: Suite 1005 Albion Plaza
2-6 Granville Road
Tsim Sha Tsui, Kowloon
Hong Kong

Certificate No : NNN17070409R01-0
Sample Received Date : 20-Jul-2017
Complete Analysis Date : 27-Jul-2017
Date Issued : 27-Jul-2017

Sample Description : Duro PVC Compound



Analytical Equipment : Agilent 5975 Inert MSD with Triple-Axis Detector-GC 7890 A
Used Perkin Elmer FIMS 100 Mercury & Hydride Generation
Perkin Elmer Optima 7000DV Inductively Coupled Plasma Optical Emission Spectrometer (ICP-OES)
Agilent 5975 Series MSD GC 6890 N

Analysis results :

PARAMETER	ANALYSIS RESULTS	UNIT	PRE-TREATMENT METHOD	DETERMINATION METHOD
Cadmium	ND(<2)	mg/kg	IEC 62321 Ed.1.0 2008	IEC 62321 Ed.1.0 2008
Lead	8	mg/kg	IEC 62321 Ed.1.0 2008	IEC 62321 Ed.1.0 2008
Mercury	ND(<2)	mg/kg	IEC 62321 Ed.1.0 2008	IEC 62321 Ed.1.0 2008
Hexavalent Chromium (Cr6+)	ND(<2)	mg/kg	IEC 62321 Ed.1.0 2008	IEC 62321 Ed.1.0 2008
diethylhexyl phthalate (DEHP)	ND(<10)	mg/kg	-	GCMS
Butyl benzyl phthalate (BBP)	ND(<10)	mg/kg	-	GCMS
dibutyl phthalate (DBP)	ND(<10)	mg/kg	-	GCMS
Sum of Polybrominated Biphenyl (PBB)	ND(<20)	mg/kg	IEC 62321 Ed.1.0 2008	IEC 62321 Ed.1.0 2008

CERTIFICATE OF ANALYSIS

Client: iDecking International Ltd

Certificate No

: NNN17070409R01-0

PARAMETER	ANALYSIS RESULTS	UNIT	PRE-TREATMENT METHOD	DETERMINATION METHOD
Sum of Polybrominated Diphenyl Ether (PBDE)	ND(<20)	mg/kg	IEC 62321 Ed.1.0 2008	IEC 62321 Ed.1.0 2008
Monobromobiphenyl	ND(<20)	mg/kg	IEC 62321 Ed.1.0 2008	IEC 62321 Ed.1.0 2008
Dibromobiphenyl	ND(<20)	mg/kg	IEC 62321 Ed.1.0 2008	IEC 62321 Ed.1.0 2008
Tribromobiphenyl	ND(<20)	mg/kg	IEC 62321 Ed.1.0 2008	IEC 62321 Ed.1.0 2008
Tetrabromobiphenyl	ND(<20)	mg/kg	IEC 62321 Ed.1.0 2008	IEC 62321 Ed.1.0 2008
Hexabromobiphenyl	ND(<20)	mg/kg	IEC 62321 Ed.1.0 2008	IEC 62321 Ed.1.0 2008
Pentabromobiphenyl	ND(<20)	mg/kg	IEC 62321 Ed.1.0 2008	IEC 62321 Ed.1.0 2008
Heptabromobiphenyl	ND(<20)	mg/kg	IEC 62321 Ed.1.0 2008	IEC 62321 Ed.1.0 2008
Octabromobiphenyl	ND(<20)	mg/kg	IEC 62321 Ed.1.0 2008	IEC 62321 Ed.1.0 2008
Nonabromobiphenyl	ND(<20)	mg/kg	IEC 62321 Ed.1.0 2008	IEC 62321 Ed.1.0 2008
Decabromobiphenyl	ND(<20)	mg/kg	IEC 62321 Ed.1.0 2008	IEC 62321 Ed.1.0 2008
Monobromodiphenyl ether	ND(<20)	mg/kg	IEC 62321 Ed.1.0 2008	IEC 62321 Ed.1.0 2008
Dibromodiphenyl ether	ND(<20)	mg/kg	IEC 62321 Ed.1.0 2008	IEC 62321 Ed.1.0 2008
Tribromodiphenyl ether	ND(<20)	mg/kg	IEC 62321 Ed.1.0 2008	IEC 62321 Ed.1.0 2008
Tetrabromodiphenyl ether	ND(<20)	mg/kg	IEC 62321 Ed.1.0 2008	IEC 62321 Ed.1.0 2008
Pentabromodiphenyl ether	ND(<20)	mg/kg	IEC 62321 Ed.1.0 2008	IEC 62321 Ed.1.0 2008
Hexabromodiphenyl ether	ND(<20)	mg/kg	IEC 62321 Ed.1.0 2008	IEC 62321 Ed.1.0 2008
Heptabromodiphenyl ether	ND(<20)	mg/kg	IEC 62321 Ed.1.0 2008	IEC 62321 Ed.1.0 2008
Octabromodiphenyl ether	ND(<20)	mg/kg	IEC 62321 Ed.1.0 2008	IEC 62321 Ed.1.0 2008
Nonabromodiphenyl ether	ND(<20)	mg/kg	IEC 62321 Ed.1.0 2008	IEC 62321 Ed.1.0 2008

CERTIFICATE OF ANALYSIS

Client: iDecking International Ltd

Certificate No

: NNN17070409R01-0

PARAMETER	ANALYSIS RESULTS	UNIT	PRE-TREATMENT METHOD	DETERMINATION METHOD
Decabromodiphenyl ether	ND(<20)	mg/kg	IEC 62321 Ed.1.0 2008	IEC 62321 Ed.1.0 2008
Diisobutyl phthalate (DIBP)	ND(<10)	mg/kg	-	GCMS

ND denotes not detected

(< Numeric number) denotes detection limits

Remark : The result of analysis performed on the submitted sample comply with the EU ROHS Directive (2011/65/EU) with maximum allowable level of 1000ppm for lead, hexavalent chromium, mercury, polybrominated biphenyl, polybrominated diphenyl ether respectively and 100ppm for cadmium.

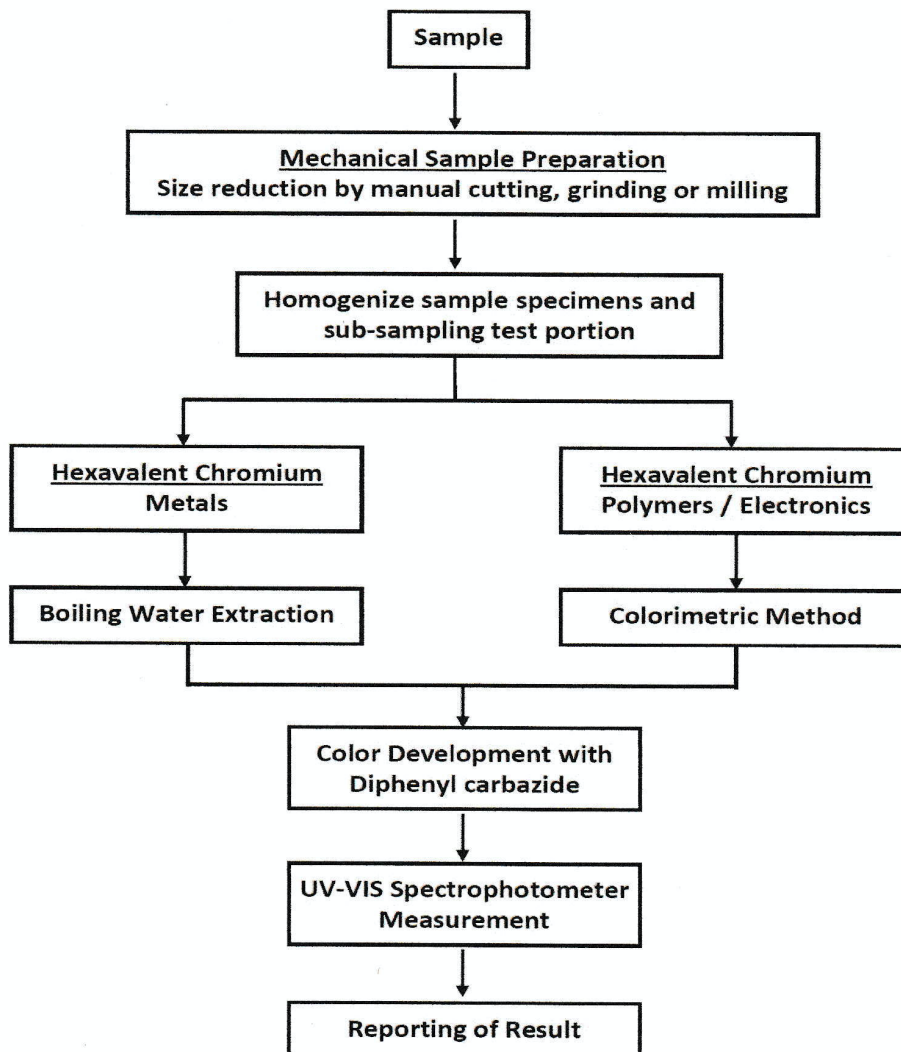
CERTIFICATE OF ANALYSIS

Client: iDecking International Ltd

Certificate No

: NNN17070409R01-0

Flow Chart for Analysis of Hexavalent Chromium in Method IEC 62321



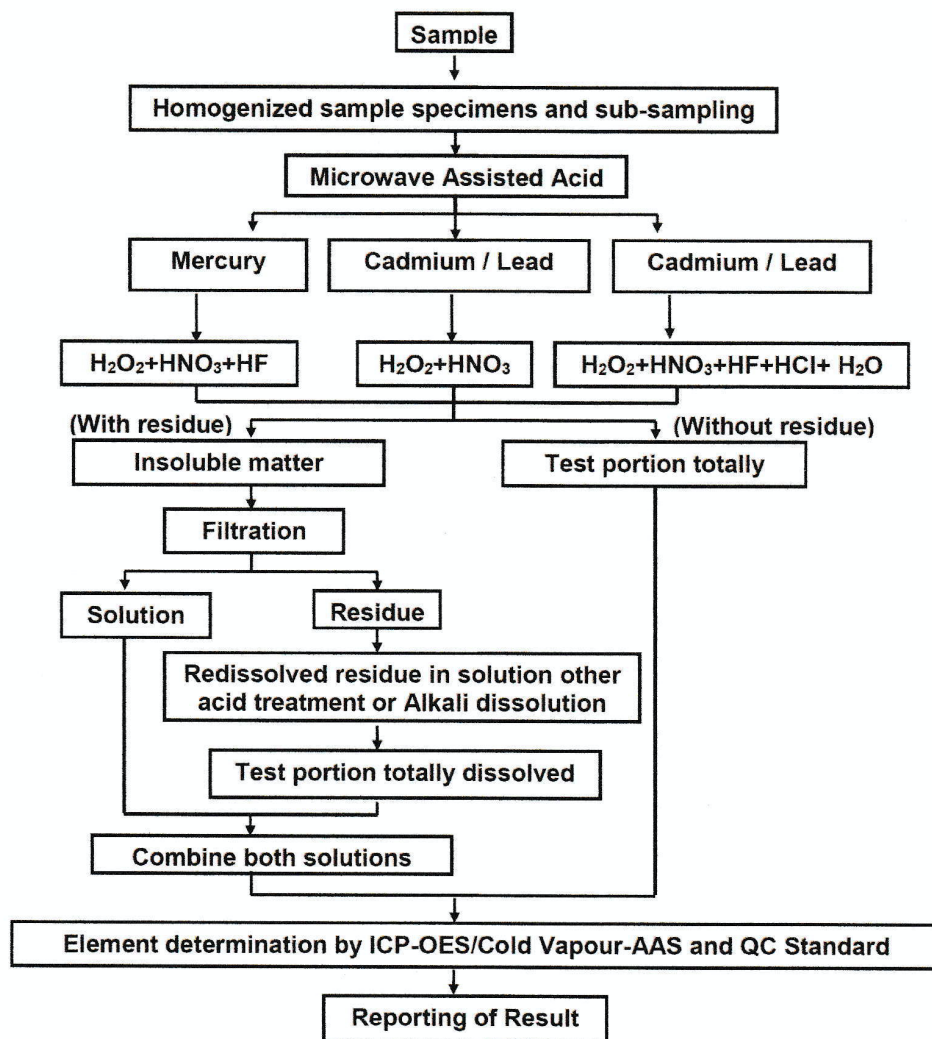
CERTIFICATE OF ANALYSIS

Client: iDecking International Ltd

Certificate No

: NNN17070409R01-0

Flow Chart for Analysis of Hg, Cd and Pb



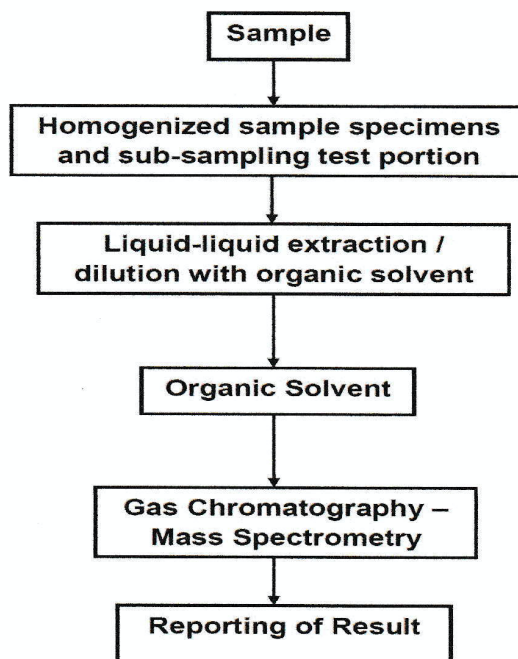
CERTIFICATE OF ANALYSIS

Client: iDecking International Ltd

Certificate No

: NNN17070409R01-0

Flow Chart for Analysis of PBB and PBDE



Teem Chin Mean
Manager
M.Sc., MMIC,
M/2152/4620/04